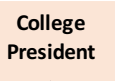


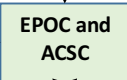
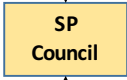
# Council and Committee Structure

Work to create, monitor, assess and revise structure

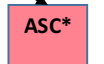
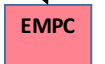
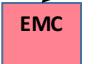
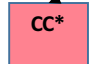
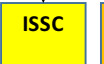
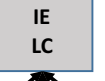
**RCCAS**  
Monitors progress  
Considers changes  
Makes modifications to structures



**College President**  
Monitors progress  
Considers changes  
Makes modifications to structures  
Acts on information generated



EPOC - Educational Program Oversight Committee  
ACSC - Accreditation Steering Committee



SLSC - Student Life and Services  
ISSC - Integrated Student Support  
SSEC - Student Success and Equity

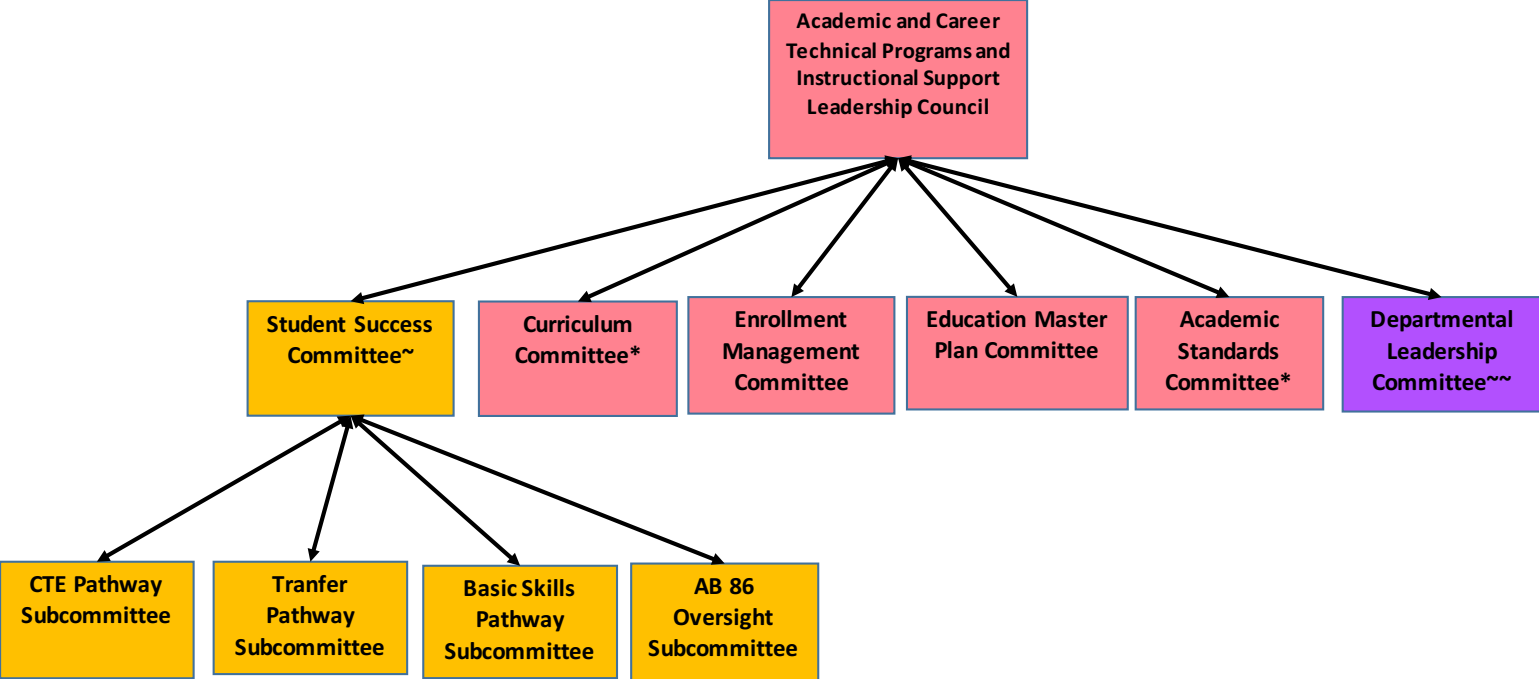
CC - Curriculum  
EMC - Enrollment Management  
EMPC - Education Master Plan  
ASC - Academic Standards  
DLC - Departmental Leadership

PRC - Physical Resources  
FRC - Financial Resources  
TRC - Technology Resources  
HRC - Human Resources

PrRC - Program Review  
AC - Assessment  
MMC - Methods and Metrics

\* Committee of the RCCAS. Curriculum offers reports directly to RCCAS.  
~Joint committee of ACTPIS and SAS  
~~Committee of the RCCAS, joint committee of ACTPIS and RDAS

# Academic and Career Technical Programs and Instructional Support (ACTPIS) Leadership Council Structure

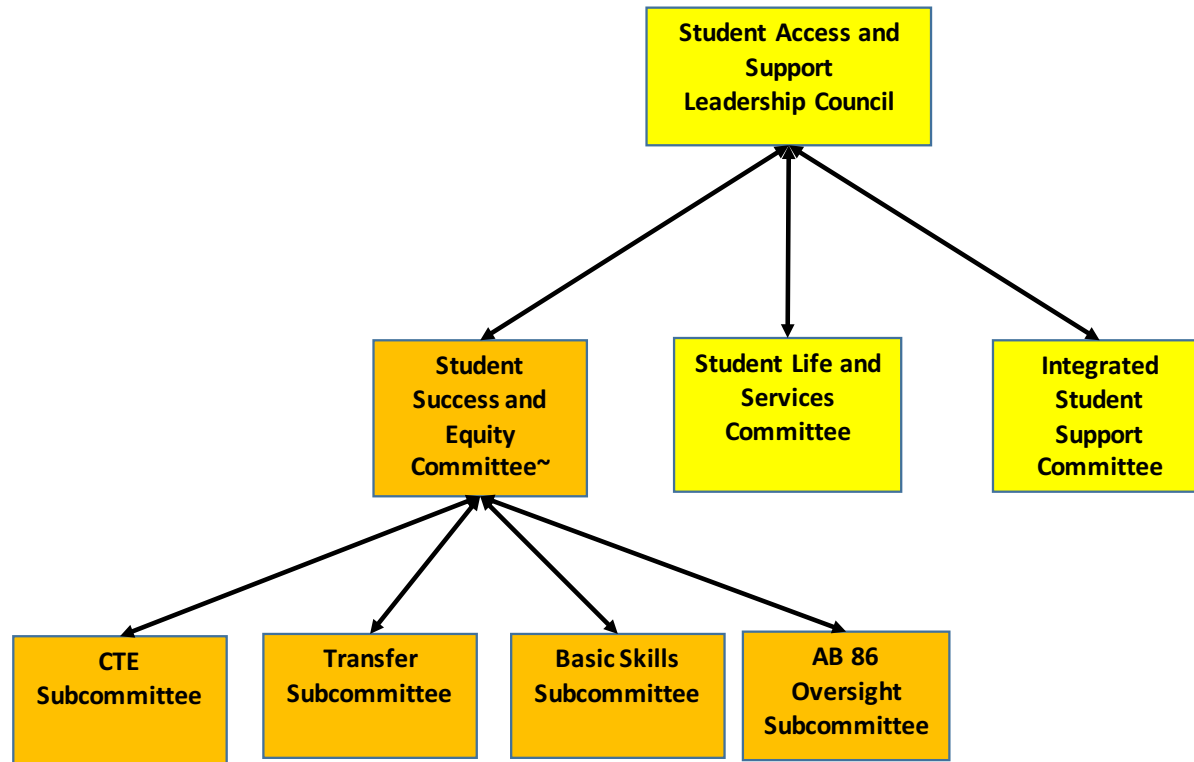


\* Committee of the RCCAS

~Joint with SAS

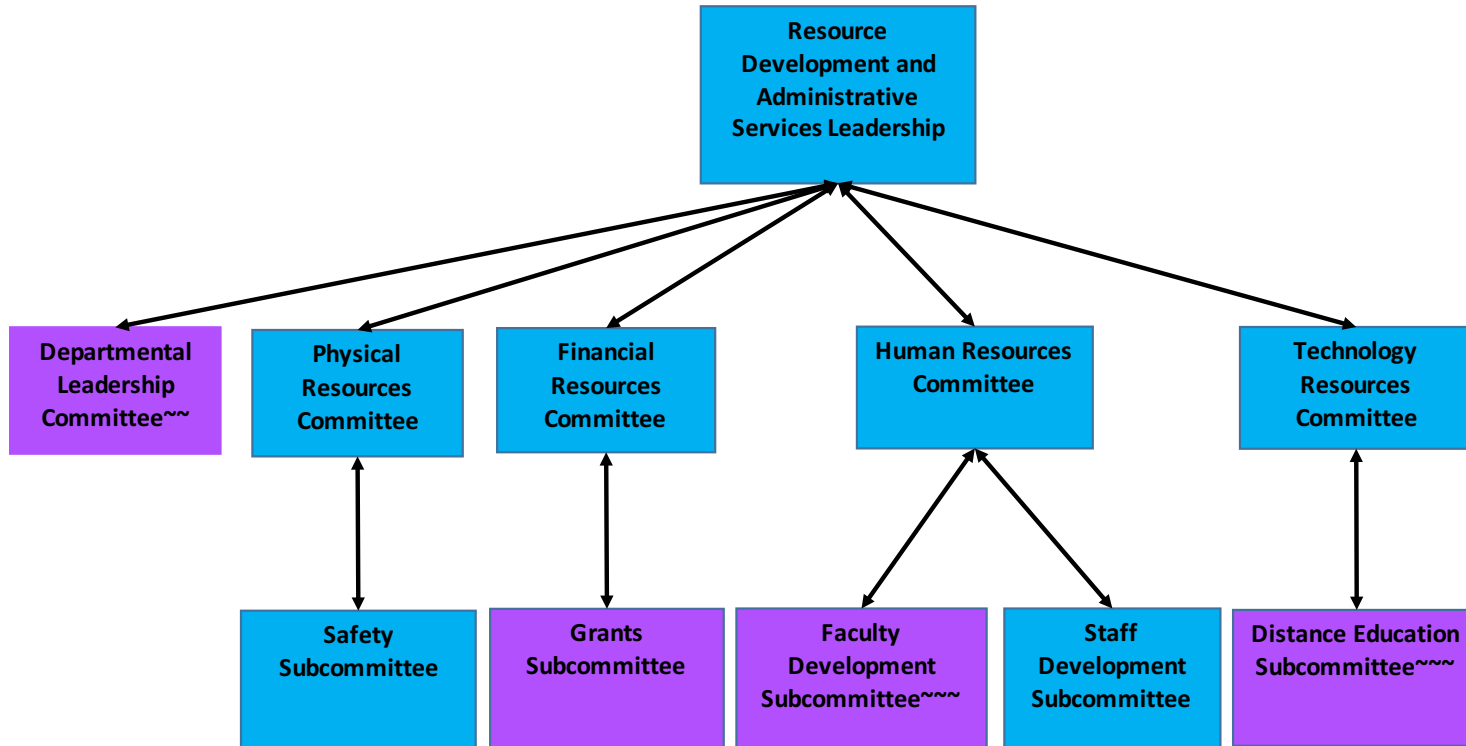
~~Committee of the RCCAS, joint with RDAS

# Student Access and Support Leadership Council Structure



~Joint with ACTPIS

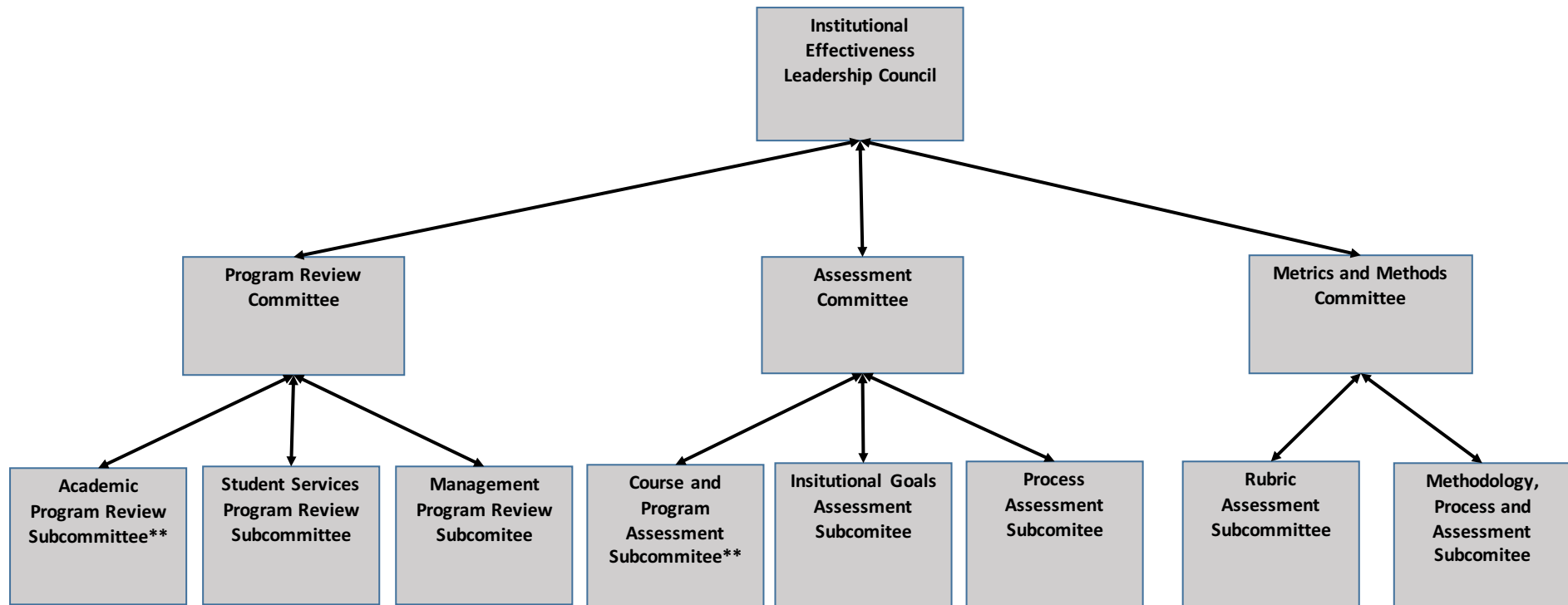
# Resource Development and Administrative Services Leadership Council Structure



~~RCCAS Committee, joint with ACTPIS

~~~~RCCAS Subcommittee, joint with ACTPIS

# Institutional Effectiveness Leadership Council



\*\*Subcommittee of the RCCAS