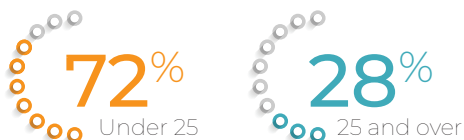


Quick Facts Fall 2024

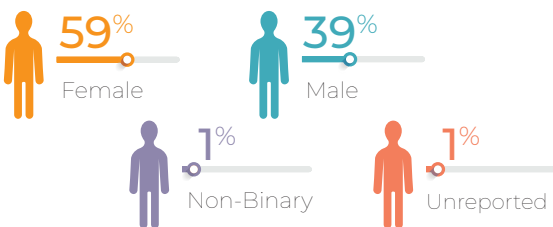
As of Census

Headcount
22,909

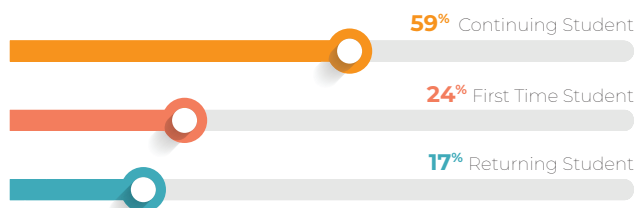
Age



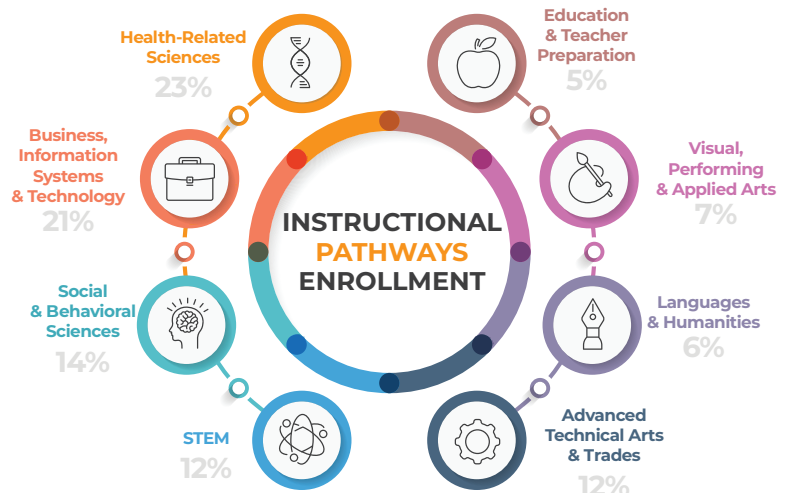
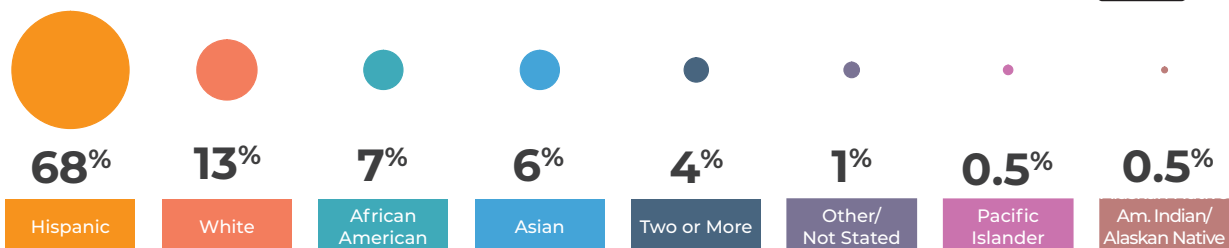
Gender



Fall Student Enrollment by Type



Race



Spring 2024 Course Success Rate

68%



Full-Time Students

35%

Part-Time Students

65%

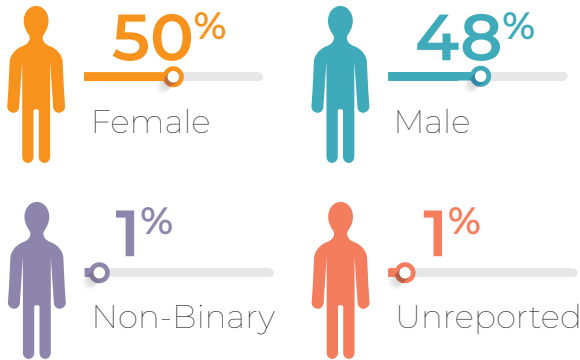


CTE Quick Facts Fall 2024

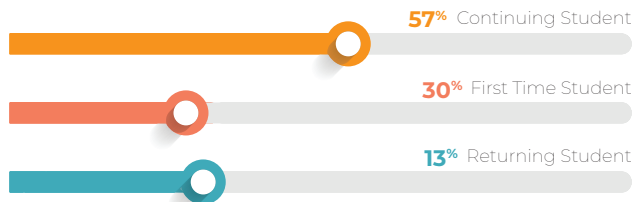
As of Census

Headcount
8,682

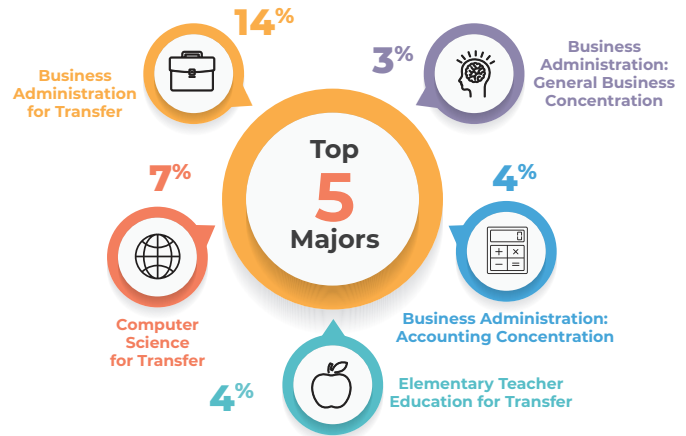
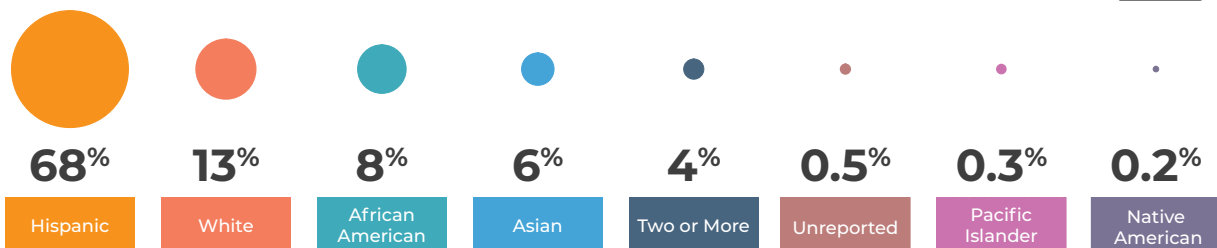
Gender



Fall Student Enrollment by Type



Race



Spring 2023 Course Success Rate
65.8%

Full-Time Students
34%

Part-Time Students
66%

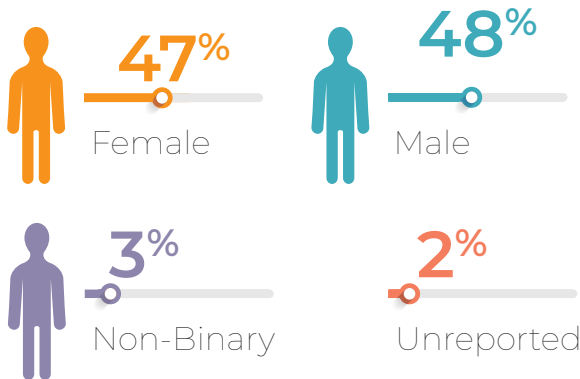


F&PA Quick Facts Fall 2024

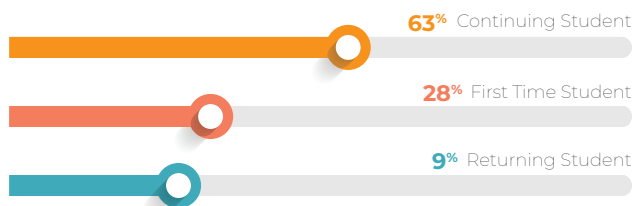
As of Census

Headcount
1,652

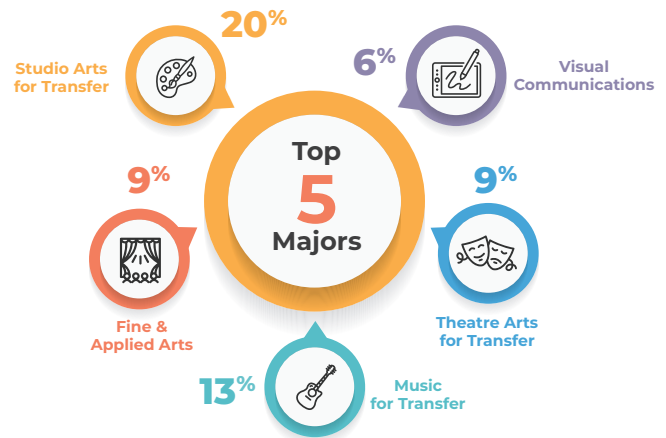
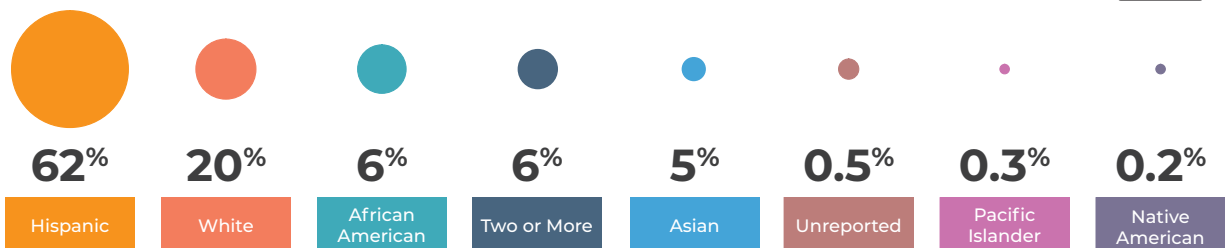
Gender



Fall Student Enrollment by Type



Race



Spring 2024 Course
Success Rate
76%

Full-Time Students
37%

Part-Time Students
63%



Kinesiology Quick Facts Fall 2024

As of Census

Headcount

955

Gender



49%

Female



50%

Male



1%

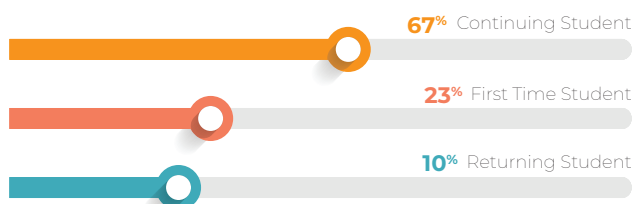
Non-Binary



0%

Unreported

Fall Student Enrollment by Type



Race



64%

Hispanic



13%

White



11%

African American



6%

Asian



5%

Two or More



0.8%

Pacific Islander



0.1%

Unreported



0.1%

Native American



Spring 2024 Course Success Rate

83.0%



Full-Time Students

38%

Part-Time Students

62%

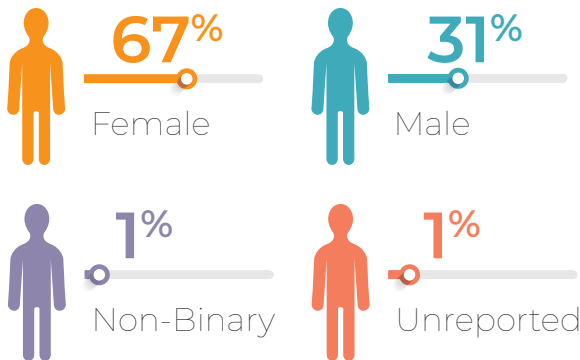


LHSS Quick Facts Fall 2024

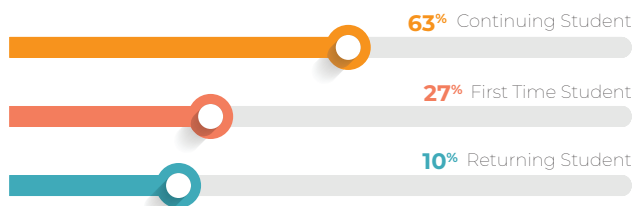
As of Census

Headcount
4,517

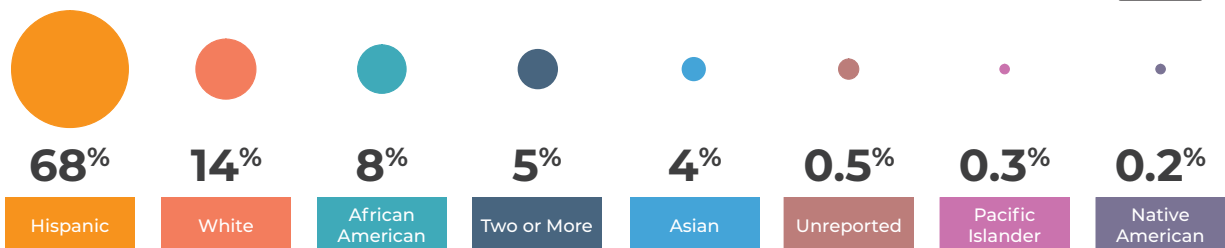
Gender



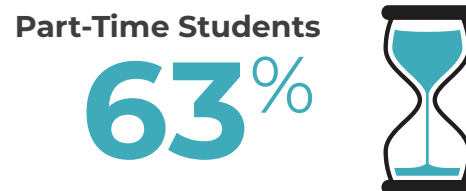
Fall Student Enrollment by Type



Race



Spring 2024 Course Success Rate
67%



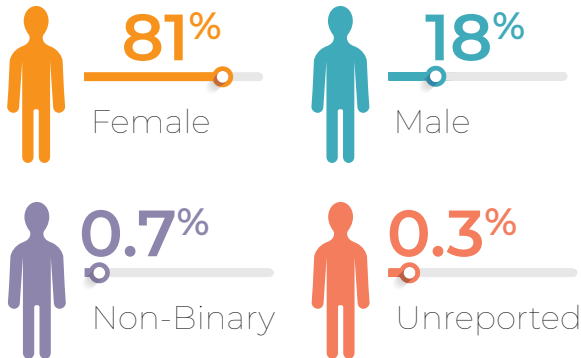


Nursing Quick Facts Fall 2024

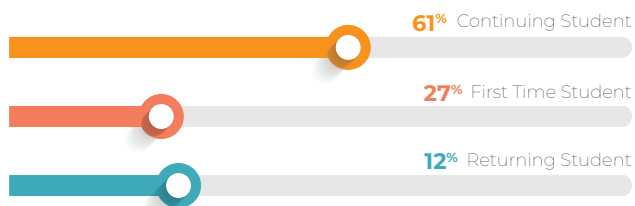
As of Census

Headcount
4,304

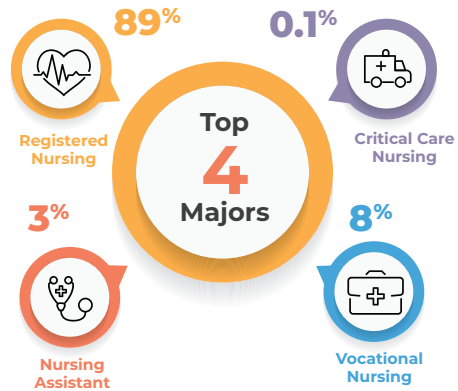
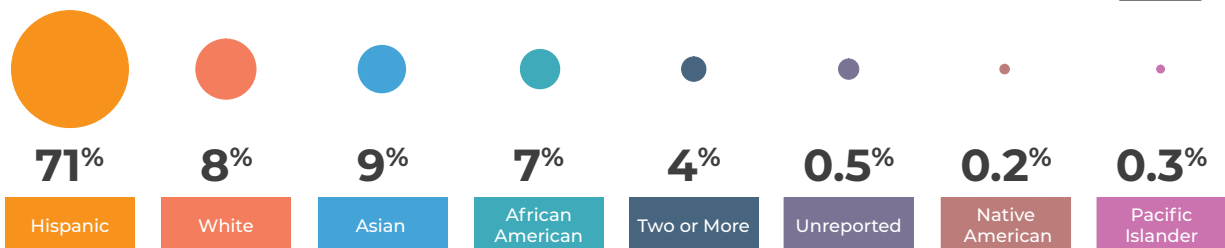
Gender



Fall Student Enrollment by Type



Race



Spring 2024 Course
Success Rate
80%



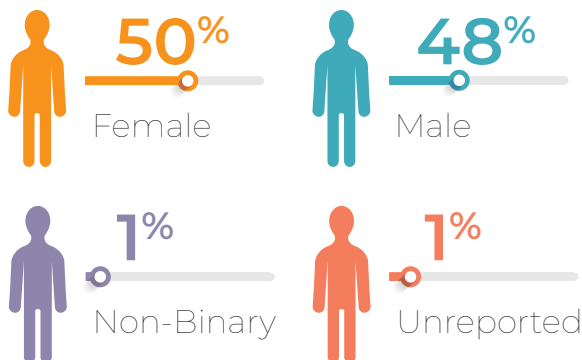


STEM Quick Facts Fall 2024

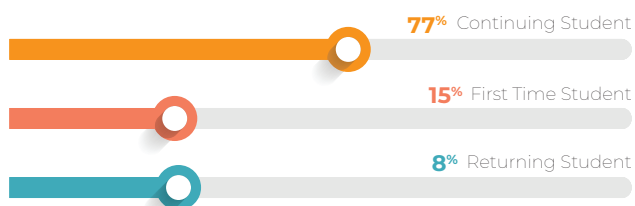
As of Census

Headcount
2,722

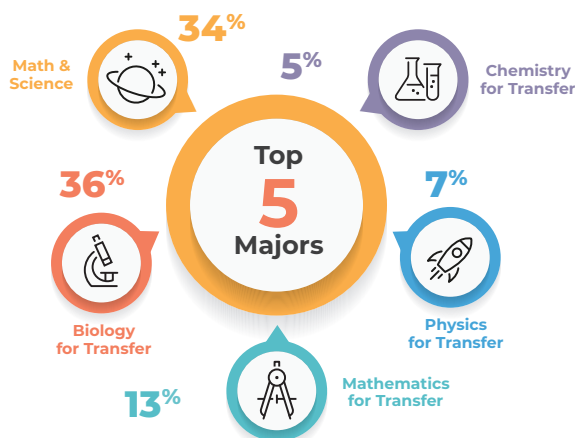
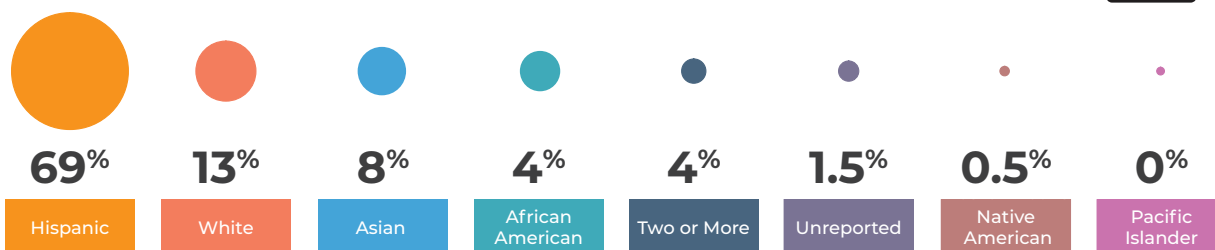
Gender



Fall Student Enrollment by Type



Race



Spring 2024 Course
Success Rate
58%

