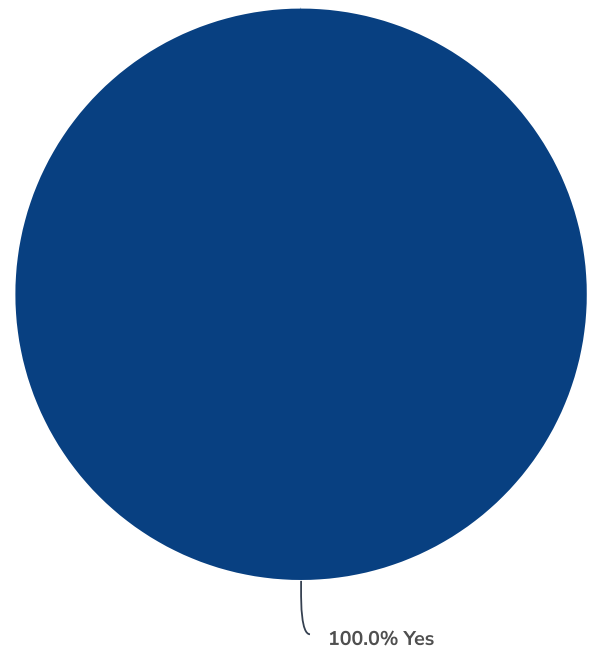


Report for #RealCollegeCalifornia2023 - Riverside

Response Counts

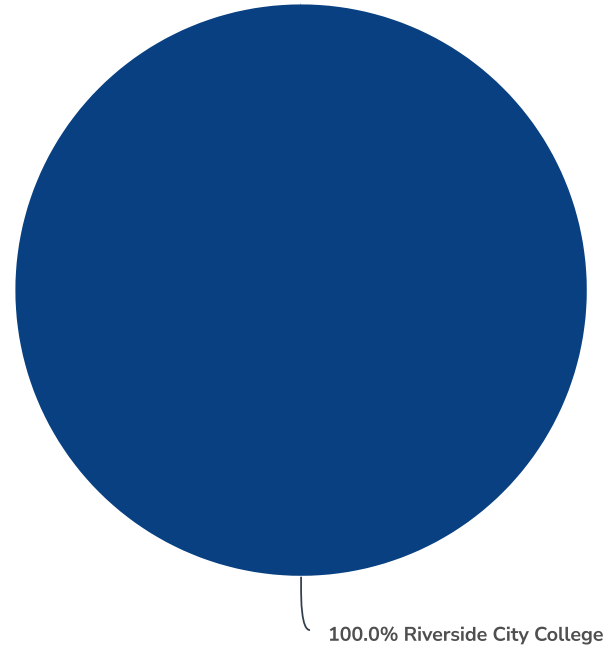
Completion Rate:	78.9%	
	Complete	783
	Partial	209
		Totals: 992

1. Do you certify that you are at least 18 years old and voluntarily consent to participate in this research study?



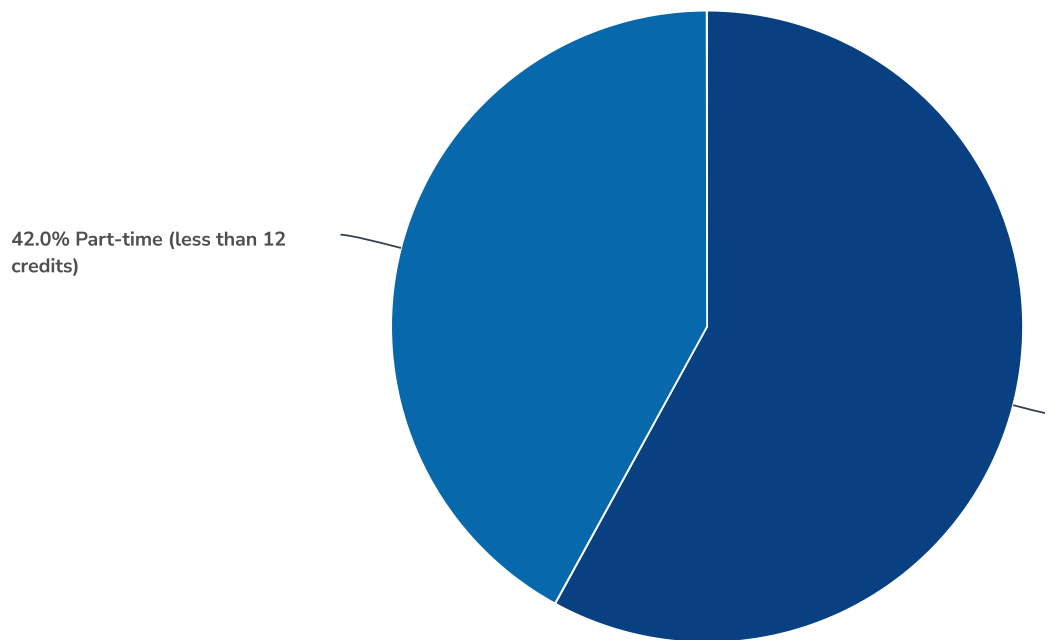
Value	Percent	Responses
Yes	100.0%	992
		Totals: 992

2. As of today, which community college do you attend? Note: If you attend more than one, please indicate the community college where you take the majority of your classes. If that college is not listed, please indicate the name of the college you received this email from.



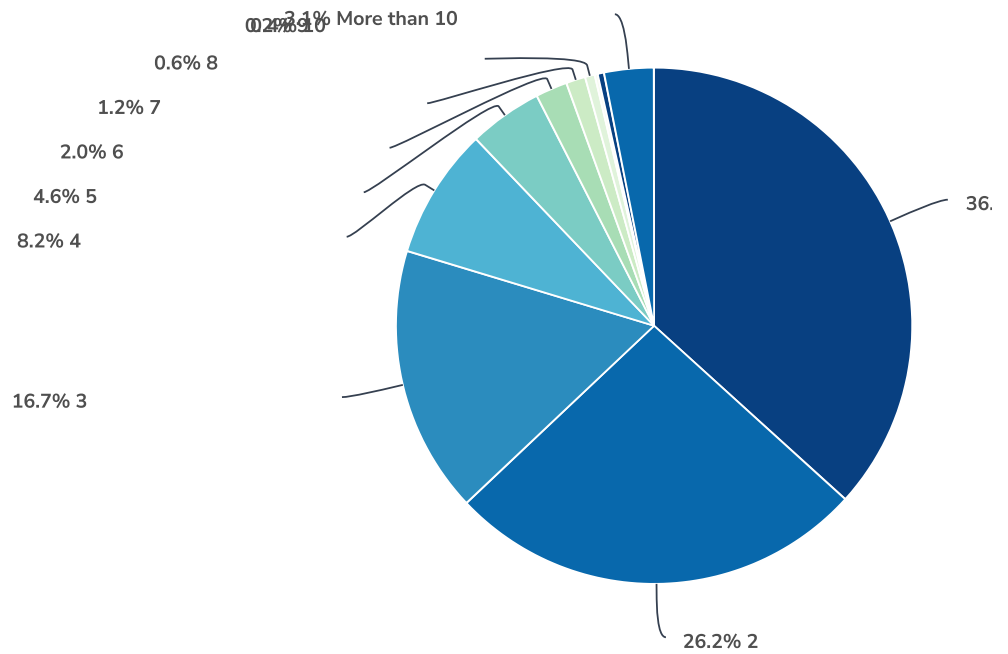
Value	Percent	Responses
Riverside City College	100.0%	992
		Totals: 992

3. As of today, are you attending college full-time or part-time?



Value	Percent	Responses
Full-time (at least 12 credits)	58.0%	572
Part-time (less than 12 credits)	42.0%	415
		Totals: 987

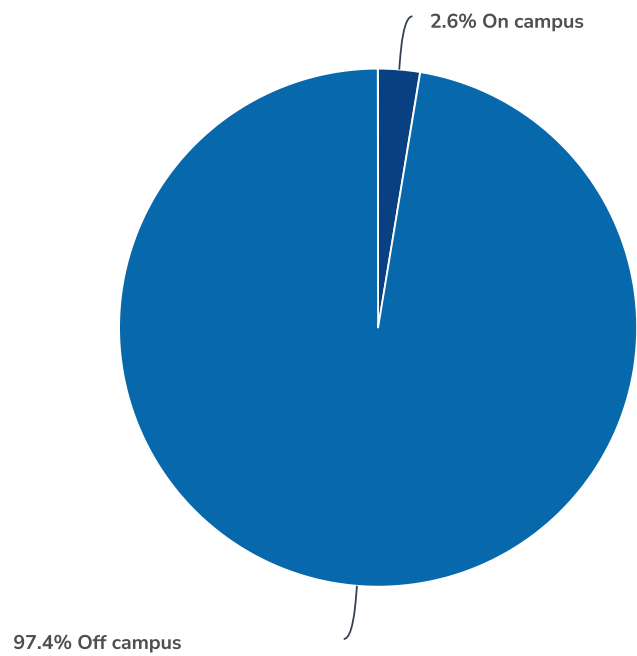
4. How many years have you been in college?



Value	Percent	Responses
1 (This is my first year)	36.7%	362
2	26.2%	259
3	16.7%	165
4	8.2%	81
5	4.6%	45
6	2.0%	20
		Totals: 987

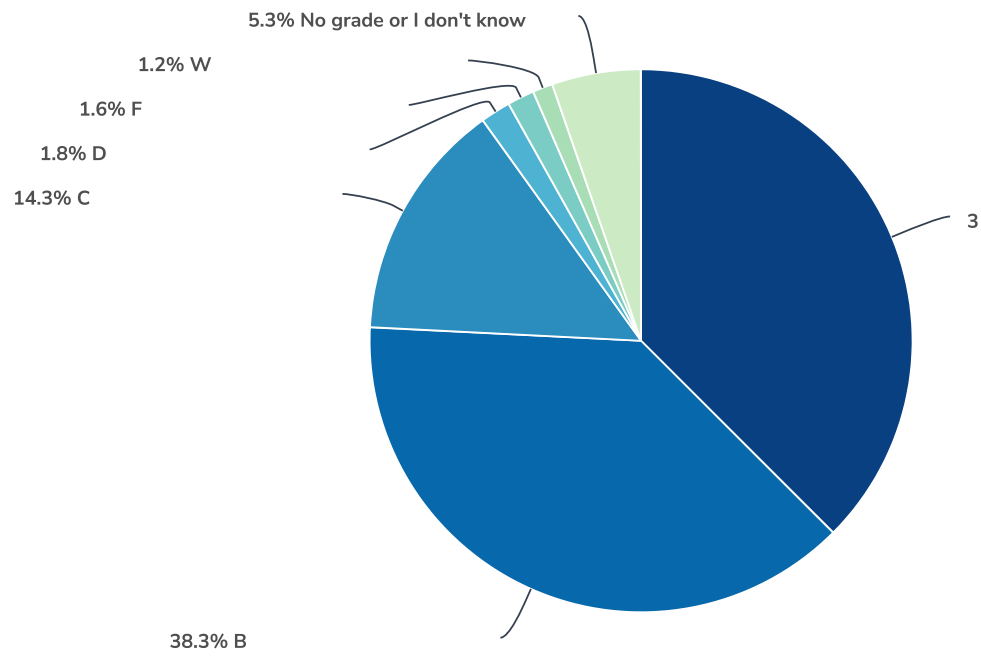
Value	Percent	Responses
7	1.2%	12
8	0.6%	6
9	0.2%	2
10	0.4%	4
More than 10	3.1%	31
		Totals: 987

5. Do you live on or off-campus?



Value	Percent	Responses
On campus	2.6%	26
Off campus	97.4%	959
		Totals: 985

6. Thinking about the past academic year, which of the following best describes your grades?



Value	Percent	Responses
A	37.5%	370
B	38.3%	378
C	14.3%	141
D	1.8%	18
F	1.6%	16
W	1.2%	12
No grade or I don't know	5.3%	52
		Totals: 987

7. Do you use the following ways to pay for the expenses associated with attending college?
(please check all that apply)

A work-study job
Count
Row %

A job that isn't a work-study job

Count

Row %

Pell Grant

Count

Row %

Grants from my college or university

Count

Row %

Grants from the federal or state government

Count

Row %

Student loans

Count

Row %

Stipend or fellowship

Count

Row %

Savings

Count

Row %

Credit cards

Count

Row %

Employer support

Count

Row %

Americorps:**Do you use the following ways to pay for the expenses associated with attending college? (please check all**

Count

Row %

And my Father supports me:**Do you use the following ways to pay for the expenses associated with attending college? (p**

Count

Row %

Asking my family and others to help pay for college:**Do you use the following ways to pay for the expenses associated with**

Count

Row %

Bankmobile:**Do you use the following ways to pay for the expenses associated with attending college? (please check all**

Count

Row %

Beg for money because college is expensive :**Do you use the following ways to pay for the expenses associated with attending college?**
Count
Row %

Big waiver, calworks:**Do you use the following ways to pay for the expenses associated with attending college?** (please check all that apply)
Count
Row %

Cal Grant:**Do you use the following ways to pay for the expenses associated with attending college?** (please check all that apply)
Count
Row %

CalFresh:**Do you use the following ways to pay for the expenses associated with attending college?** (please check all that apply)
Count
Row %

CalWORKs, CalFresh, EOPS:**Do you use the following ways to pay for the expenses associated with attending college?** (please check all that apply)
Count
Row %

California Promise Grant:**Do you use the following ways to pay for the expenses associated with attending college?** (please check all that apply)
Count
Row %

Calworks :**Do you use the following ways to pay for the expenses associated with attending college?** (please check all that apply)
Count
Row %

Cash Aid:**Do you use the following ways to pay for the expenses associated with attending college?** (please check all that apply)
Count
Row %

Cash aid :**Do you use the following ways to pay for the expenses associated with attending college?** (please check all that apply)
Count
Row %

Cash-aid:**Do you use the following ways to pay for the expenses associated with attending college?** (please check all that apply)
Count
Row %

Debit card :**Do you use the following ways to pay for the expenses associated with attending college?** (please check all that apply)
Count
Row %

Dependent on parents:**Do you use the following ways to pay for the expenses associated with attending college?** (please check all that apply)
Count
Row %

Donations and family :**Do you use the following ways to pay for the expenses associated with attending college?** (please check all that apply)
Count
Row %

EOPS, La Casa: **Do you use the following ways to pay for the expenses associated with attending college? (please check all that apply)**
Count
Row %

EOPS, TRIO, Disability Resource Center, Cal Fresh Employment and Training: **Do you use the following ways to pay for the expenses associated with attending college? (please check all that apply)**
Count
Row %

Employee : **Do you use the following ways to pay for the expenses associated with attending college? (please check all that apply)**
Count
Row %

Employment : **Do you use the following ways to pay for the expenses associated with attending college? (please check all that apply)**
Count
Row %

Fafsa: **Do you use the following ways to pay for the expenses associated with attending college? (please check all that apply)**
Count
Row %

Fafsa : **Do you use the following ways to pay for the expenses associated with attending college? (please check all that apply)**
Count
Row %

Familial support: **Do you use the following ways to pay for the expenses associated with attending college? (please check all that apply)**
Count
Row %

Family : **Do you use the following ways to pay for the expenses associated with attending college? (please check all that apply)**
Count
Row %

Family assistance : **Do you use the following ways to pay for the expenses associated with attending college? (please check all that apply)**
Count
Row %

Family help: **Do you use the following ways to pay for the expenses associated with attending college? (please check all that apply)**
Count
Row %

Family help : **Do you use the following ways to pay for the expenses associated with attending college? (please check all that apply)**
Count
Row %

Family support: **Do you use the following ways to pay for the expenses associated with attending college? (please check all that apply)**
Count
Row %

Family support : **Do you use the following ways to pay for the expenses associated with attending college? (please check all that apply)**
Count
Row %

Fee waiver:Do you use the following ways to pay for the expenses associated with attending college? (please check all that apply)
Count
Row %

Financial Aide:Do you use the following ways to pay for the expenses associated with attending college? (please check all that apply)
Count
Row %

Financial Aide :Do you use the following ways to pay for the expenses associated with attending college? (please check all that apply)
Count
Row %

Financial aid:Do you use the following ways to pay for the expenses associated with attending college? (please check all that apply)
Count
Row %

Financial aid scholarship:Do you use the following ways to pay for the expenses associated with attending college? (please check all that apply)
Count
Row %

GI Bill:Do you use the following ways to pay for the expenses associated with attending college? (please check all that apply)
Count
Row %

GI bill:Do you use the following ways to pay for the expenses associated with attending college? (please check all that apply)
Count
Row %

GI bill :Do you use the following ways to pay for the expenses associated with attending college? (please check all that apply)
Count
Row %

Gi Bill:Do you use the following ways to pay for the expenses associated with attending college? (please check all that apply)
Count
Row %

Gi bill:Do you use the following ways to pay for the expenses associated with attending college? (please check all that apply)
Count
Row %

Home:Do you use the following ways to pay for the expenses associated with attending college? (please check all that apply)
Count
Row %

I am looking for Scholarship's and grants to pay :Do you use the following ways to pay for the expenses associated with attending college? (please check all that apply)
Count
Row %

I get SSI:Do you use the following ways to pay for the expenses associated with attending college? (please check all that apply)
Count
Row %

I pay whatever the grant doesn't cover:**Do you use the following ways to pay for the expenses associated with attending college?**
Count
Row %

I work a part time job:**Do you use the following ways to pay for the expenses associated with attending college? (please check all that apply)**
Count
Row %

I work at the community college I attended that helps with bills and food and books and paying for classes :**Do you use the following ways to pay for the expenses associated with attending college? (please check all that apply)**
Count
Row %

I work full time in a restaurant and bear my expenses. :**Do you use the following ways to pay for the expenses associated with attending college? (please check all that apply)**
Count
Row %

I'm on ssi:**Do you use the following ways to pay for the expenses associated with attending college? (please check all that apply)**
Count
Row %

Minimum wage job :**Do you use the following ways to pay for the expenses associated with attending college? (please check all that apply)**
Count
Row %

My husband works. I quit my job to do am classes :**Do you use the following ways to pay for the expenses associated with attending college? (please check all that apply)**
Count
Row %

My job :**Do you use the following ways to pay for the expenses associated with attending college? (please check all that apply)**
Count
Row %

My parents:**Do you use the following ways to pay for the expenses associated with attending college? (please check all that apply)**
Count
Row %

My parents support me:**Do you use the following ways to pay for the expenses associated with attending college? (please check all that apply)**
Count
Row %

N/A:**Do you use the following ways to pay for the expenses associated with attending college? (please check all that apply)**
Count
Row %

Na:**Do you use the following ways to pay for the expenses associated with attending college? (please check all that apply)**
Count
Row %

Other :**Do you use the following ways to pay for the expenses associated with attending college? (please check all that apply)**
Count
Row %

Overtime from employer:**Do you use the following ways to pay for the expenses associated with attending college?** (please check all that apply)
Count
Row %

Parent:**Do you use the following ways to pay for the expenses associated with attending college?** (please check all that apply)
Count
Row %

Parent support:**Do you use the following ways to pay for the expenses associated with attending college?** (please check all that apply)
Count
Row %

Parental Support:**Do you use the following ways to pay for the expenses associated with attending college?** (please check all that apply)
Count
Row %

Parental assistance :**Do you use the following ways to pay for the expenses associated with attending college?** (please check all that apply)
Count
Row %

Parental support:**Do you use the following ways to pay for the expenses associated with attending college?** (please check all that apply)
Count
Row %

Parental support :**Do you use the following ways to pay for the expenses associated with attending college?** (please check all that apply)
Count
Row %

Parents:**Do you use the following ways to pay for the expenses associated with attending college?** (please check all that apply)
Count
Row %

Parents :**Do you use the following ways to pay for the expenses associated with attending college?** (please check all that apply)
Count
Row %

Parents money:**Do you use the following ways to pay for the expenses associated with attending college?** (please check all that apply)
Count
Row %

Partners income :**Do you use the following ways to pay for the expenses associated with attending college?** (please check all that apply)
Count
Row %

Pay out of pocket without financial support :**Do you use the following ways to pay for the expenses associated with attending college?** (please check all that apply)
Count
Row %

Post GI:**Do you use the following ways to pay for the expenses associated with attending college?** (please check all that apply)
Count
Row %

Post GI bill:**Do you use the following ways to pay for the expenses associated with attending college? (please check all that apply)**
Count
Row %

Promise Program:**Do you use the following ways to pay for the expenses associated with attending college? (please check all that apply)**
Count
Row %

Promise Program :**Do you use the following ways to pay for the expenses associated with attending college? (please check all that apply)**
Count
Row %

Promise Program offered by RCC :**Do you use the following ways to pay for the expenses associated with attending college? (please check all that apply)**
Count
Row %

Promise program:**Do you use the following ways to pay for the expenses associated with attending college? (please check all that apply)**
Count
Row %

Promise program :**Do you use the following ways to pay for the expenses associated with attending college? (please check all that apply)**
Count
Row %

Regular employment :**Do you use the following ways to pay for the expenses associated with attending college? (please check all that apply)**
Count
Row %

SSI:**Do you use the following ways to pay for the expenses associated with attending college? (please check all that apply)**
Count
Row %

Savings:**Do you use the following ways to pay for the expenses associated with attending college? (please check all that apply)**
Count
Row %

Scholarship:**Do you use the following ways to pay for the expenses associated with attending college? (please check all that apply)**
Count
Row %

Scholarship :**Do you use the following ways to pay for the expenses associated with attending college? (please check all that apply)**
Count
Row %

Scholarship program:**Do you use the following ways to pay for the expenses associated with attending college? (please check all that apply)**
Count
Row %

Scholarships:**Do you use the following ways to pay for the expenses associated with attending college? (please check all that apply)**
Count
Row %

Scholarships :**Do you use the following ways to pay for the expenses associated with attending college? (please check all that apply)**
Count
Row %

Social Security Disability Insurance :**Do you use the following ways to pay for the expenses associated with attending college? (please check all that apply)**
Count
Row %

Someone supported from family and friends :**Do you use the following ways to pay for the expenses associated with attending college? (please check all that apply)**
Count
Row %

Spouse:**Do you use the following ways to pay for the expenses associated with attending college? (please check all that apply)**
Count
Row %

Spouse debit card:**Do you use the following ways to pay for the expenses associated with attending college? (please check all that apply)**
Count
Row %

Spouse support :**Do you use the following ways to pay for the expenses associated with attending college? (please check all that apply)**
Count
Row %

Taking a free extended learning class this semester:**Do you use the following ways to pay for the expenses associated with attending college? (please check all that apply)**
Count
Row %

Through company:**Do you use the following ways to pay for the expenses associated with attending college? (please check all that apply)**
Count
Row %

Try to make ways to make money:**Do you use the following ways to pay for the expenses associated with attending college? (please check all that apply)**
Count
Row %

VA:**Do you use the following ways to pay for the expenses associated with attending college? (please check all that apply)**
Count
Row %

VA Disability:**Do you use the following ways to pay for the expenses associated with attending college? (please check all that apply)**
Count
Row %

VA compensation - military retirement pay :**Do you use the following ways to pay for the expenses associated with attending college? (please check all that apply)**
Count
Row %

Veteran education benefits :**Do you use the following ways to pay for the expenses associated with attending college? (please check all that apply)**
Count
Row %

Veterans Benefit :Do you use the following ways to pay for the expenses associated with attending college? (please check all that apply)
Count
Row %

Veterans benefits :Do you use the following ways to pay for the expenses associated with attending college? (please check all that apply)
Count
Row %

Veterans chapter 35:Do you use the following ways to pay for the expenses associated with attending college? (please check all that apply)
Count
Row %

Work:Do you use the following ways to pay for the expenses associated with attending college? (please check all that apply)
Count
Row %

Work :Do you use the following ways to pay for the expenses associated with attending college? (please check all that apply)
Count
Row %

book voucher:Do you use the following ways to pay for the expenses associated with attending college? (please check all that apply)
Count
Row %

family blessings:Do you use the following ways to pay for the expenses associated with attending college? (please check all that apply)
Count
Row %

high school pays for it:Do you use the following ways to pay for the expenses associated with attending college? (please check all that apply)
Count
Row %

parents:Do you use the following ways to pay for the expenses associated with attending college? (please check all that apply)
Count
Row %

parents :Do you use the following ways to pay for the expenses associated with attending college? (please check all that apply)
Count
Row %

paying by-self (cash):Do you use the following ways to pay for the expenses associated with attending college? (please check all that apply)
Count
Row %

savings:Do you use the following ways to pay for the expenses associated with attending college? (please check all that apply)
Count
Row %

scholarship:Do you use the following ways to pay for the expenses associated with attending college? (please check all that apply)
Count
Row %

self:Do you use the following ways to pay for the expenses associated with attending college? (please check all that apply)

Count

Row %

ssi:Do you use the following ways to pay for the expenses associated with attending college? (please check all that apply)

Count

Row %

work at a restaurant:Do you use the following ways to pay for the expenses associated with attending college? (please check all that apply)

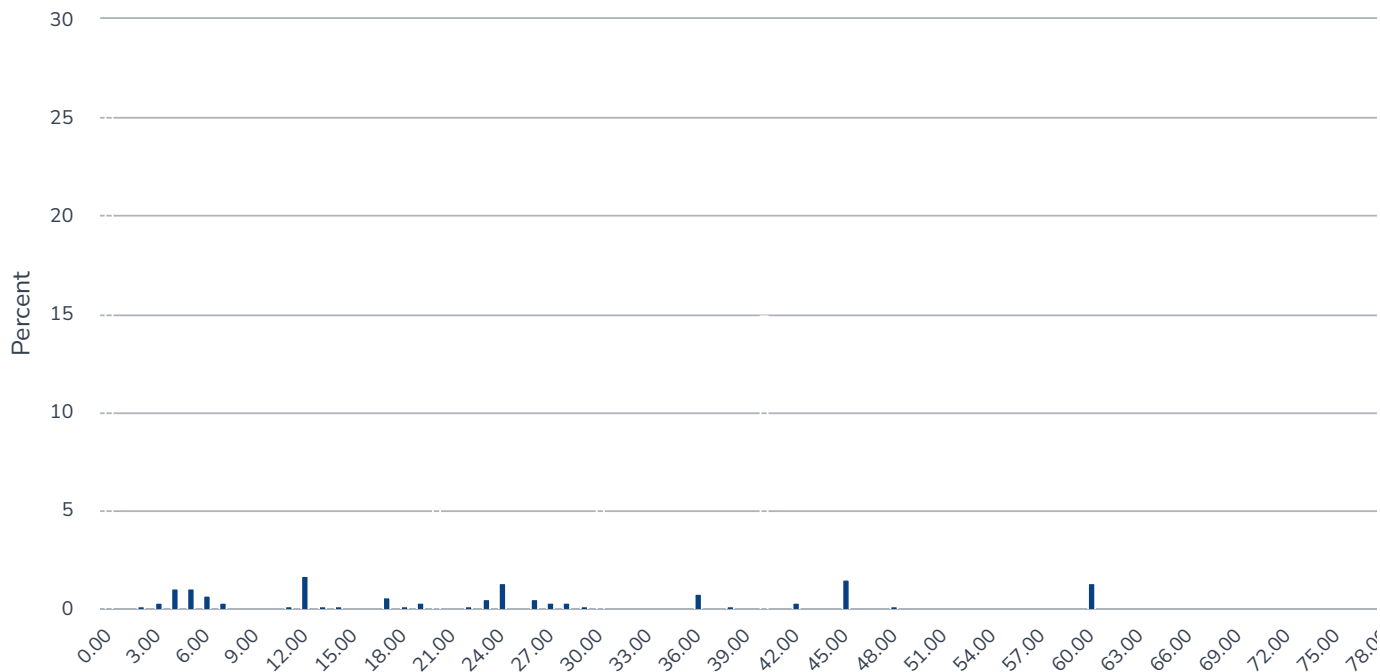
Count

Row %

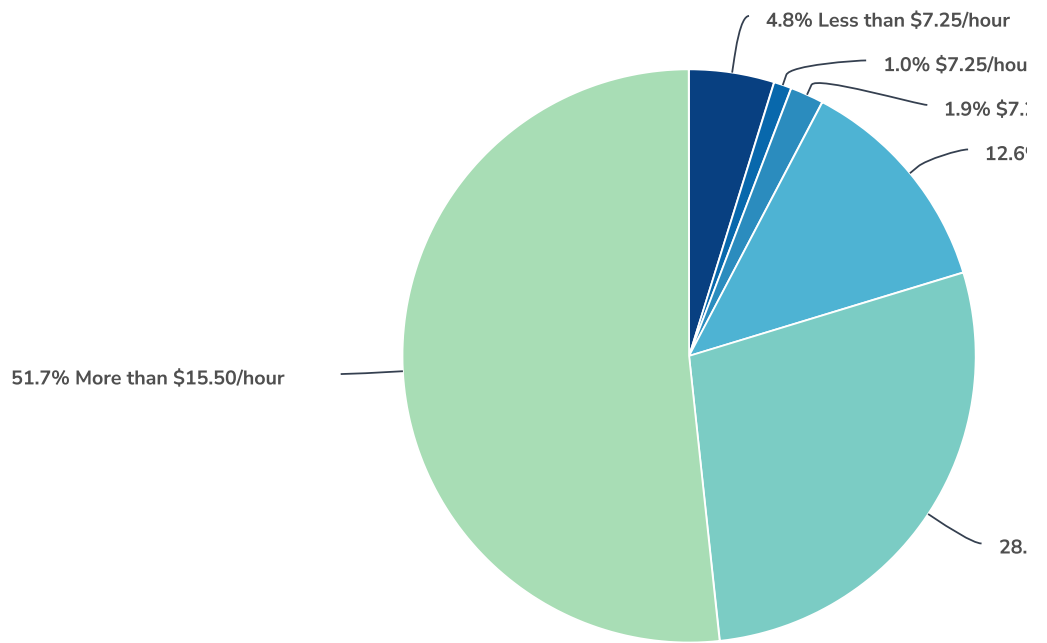
Totals

Total Responses

8. About how many hours do you generally work each week (include all your jobs)?



9. Thinking about all of your jobs, on average, about how much do you earn an hour?



Value	Percent	Responses
Less than \$7.25/hour	4.8%	28
\$7.25/hour	1.0%	6
\$7.26 to \$10.00/hour	1.9%	11
\$10.01 to \$15.49/hour	12.6%	74
\$15.50/hour	28.0%	164
More than \$15.50/hour	51.7%	303

Totals: 586

10. In the last 30 days have you been looking for work?

Chart Loading

11. In the past 12 months have you...?

Chart Loading

12. In the past 12 months, was there a rent or mortgage increase that made it difficult to pay?

Chart Loading

13. In the past 12 months, how many times have you moved?

Chart Loading

14. In the past 12 months, have you stayed in an unhealthy relationship to have somewhere to live?

Chart Loading

15. In the past 12 months, did you leave your household because you felt unsafe?

Chart Loading

16. How safe do you feel where you currently live?

Chart Loading

17. In the past 12 months, have you ever been homeless?

Chart Loading

18. In the past 12 months, did you couch surf that is, moved from one temporary housing arrangement to another because you had no other place to live?

Chart Loading

19. In the past 12 months have you slept in any of the following places? (please check all that apply)

Chart Loading

20. Is your home in a public housing project, owned by a local housing authority or other public agency?

Chart Loading

21. Do you receive a public housing voucher, such as Section 8, to subsidize the cost of private housing?

Chart Loading

22. Do you have any biological, adopted, step, or foster children who live in your household?

Chart Loading

23. Please indicate the number of biological, adopted, step, or foster children who live in your household.

Chart Loading

24. Do you consider yourself to be a single parent?

Chart Loading

25. Do you provide care for any of the following in your household? (check all that apply)

Chart Loading

26. In the last 30 days, were the following situations often true, sometimes true, or never true for you?

Chart Loading

27. In the last 30 days, did you ever cut the size of your meals or skip meals because there wasn't enough money for food?

Chart Loading

28. In the last 30 days, how often did this happen (you cut the size of your meals or skipped meals because there wasn't enough money for food)?

Chart Loading

29. In the last 30 days, did you ever eat less than you felt you should because there wasn't enough money for food?

Chart Loading

30. In the last 30 days, were you ever hungry but didn't eat because there wasn't enough money for food?

Chart Loading

31. In the last 30 days, did you lose weight because there wasn't enough money for food?

Chart Loading

32. In the last 30 days, did you stay in an unhealthy relationship so you or you and your family would have enough food?

Chart Loading

33. In the last 30 days, did you ever not eat for a whole day because there wasn't enough money for food?

Chart Loading

34. In the last 30 days, how often did this happen (you did not eat for a whole day because there wasn't enough money for food)?

Chart Loading

35. Were the following statements often, sometimes, or never true for you in the last 30 days?

Chart Loading

36. In the last 30 days...

Chart Loading

37. In the last 30 days, how often did this happen (your children skipped meals due to lack of money or food)?

Chart Loading

38. Does your college have any of the following food services on-campus?

Chart Loading

39. Do you purchase a college meal plan?

Chart Loading

40. What type of meal plan do you have?

Chart Loading

41. How many meals does your meal plan provide each week?

Chart Loading

42. How many meals do you think you eat on campus in a typical week?

Chart Loading

43. In the past 12 months, did you ever not eat or eat less than you felt you should during winter and spring breaks because the food service options on campus were closed?

Chart Loading

44. Does your college have on-campus residence halls?

Chart Loading

45. In the last 12 months, have you...

Chart Loading

46. In the past 12 months, did you receive assistance from any of the following programs?

Chart Loading

47. Have you ever been convicted of a crime? (Please don't count minor traffic violations.)

Chart Loading

48. How many years have passed since your last conviction?

Chart Loading

49. How long were you incarcerated?

Chart Loading

50. Are you currently on probation or parole?

Chart Loading

51. Currently, how do you describe yourself?

Chart Loading

52. Do you identify as transgender?

Chart Loading

53. Currently, how do you describe yourself? (check all that apply)

Chart Loading

54. In what year were you born?

Chart Loading

55. Are you a U.S. citizen or permanent resident?

Chart Loading

56. Have you ever served in the U.S. Armed Forces, Military Reserves, or National Guard?

Chart Loading

57. How do you usually describe your race and/or ethnicity? (Select all that apply)

Chart Loading

58. What is the highest level of education completed by either of your parents and/or guardians?

Chart Loading

59. In the last year, did a parent or guardian claim you as a “dependent” for tax purposes?

Chart Loading

60. Do you have any of the following disabilities or medical conditions? (Mark Yes or No for each item)

Chart Loading

61. How would you describe your current relationship status?

Chart Loading

62. Have you ever been in foster care?

Chart Loading

63. Thinking back to the last full week that began on a Monday and ended on a Sunday, for about how many total hours did you spend doing each of the following activities?

Chart Loading

This is a report for "#RealCollegeCalifornia2023" (Survey #7210577)